

Dr. Tito Caffi



UNIVERSITÀ  
CATTOLICA  
del Sacro Cuore

# Pre-course in

# PLANT PATHOLOGY

*Disease and Pest Management toward a sustainable viticulture*

*Master VENIT*



UNIVERSITÀ  
CATTOLICA  
del Sacro Cuore

# Course outline



Instructor – Dott. Tito Caffi

[tito.caffi@unicatt.it](mailto:tito.caffi@unicatt.it)

[http://docenti.unicatt.it/eng/tito\\_caffi/](http://docenti.unicatt.it/eng/tito_caffi/)



UNIVERSITÀ  
CATTOLICA  
del Sacro Cuore

ITALIANO | ENGLISH

SEARCH PAGE | BACKEND

## UNIVERSITÀ CATTOLICA del Sacro Cuore



**TITO CAFFI**  
Researcher

Faculty of AGRICULTURE

Campus: Piacenza

Dipartimento di Scienze delle produzioni vegetali sostenibili  
(DI.PRO.VE.S.)

### OFFICE HOURS:

Each working day at the Sustainable Crop Protection Area

### CONTACT INFO:

Tel +39 0523 599236

e-mail: [tito.caffi@unicatt.it](mailto:tito.caffi@unicatt.it)

Personal web site

Profile

Publications

Research

Teaching

News

SEARCH

### Teaching

■ Academic Year 2018-2019

■ Academic Year 2017-2018

### Download Area

VENIT

Password:

Access

Venit18

### (\*)CROP PROTECTION

A. Y. 2018-2019

CAMPUS: Piacenza

SCHOOL: Agriculture

DEGREE:

BLACKBOARD

COURSE PROGRAM

LESSON'S TIMETABLE

EXAM SESSIONS

### (\*)INTEGRATED VINEYARD PROTECTION

A. Y. 2018-2019

CAMPUS: Piacenza

SCHOOL: Agriculture

DEGREE:

BLACKBOARD

COURSE PROGRAM

LESSON'S TIMETABLE

EXAM SESSIONS

### (\*)SEMINARI

A. Y. 2018-2019 - La legislazione fitosanitaria sui patogeni da quarantena:  
Xylella/olivo come caso studio

CAMPUS: Piacenza

SCHOOL: Agriculture

DEGREE: Agricultural sciences and technologies, Food science and technology

BLACKBOARD

COURSE PROGRAM

LESSON'S TIMETABLE

EXAM SESSIONS



UNIVERSITÀ  
CATTOLICA  
del Sacro Cuore

# Course outline



Instructor – Dott. Tito Caffi

[tito.caffi@unicatt.it](mailto:tito.caffi@unicatt.it)

[http://docenti.unicatt.it/eng/tito\\_caffi/](http://docenti.unicatt.it/eng/tito_caffi/)

**Agriculture's Faculty Building  
3<sup>rd</sup> floor DIPROVES  
Room 275**

**I will receive students after classes**



## **Content**

- Background information about importance of plant diseases. Myth, history and science: why study plant pathology?

### **ECT 1**

- Causal agents of disease (bacteria, viruses, fungi, phytoplasmas and viroids);
- Koch's postulates and main diagnosis methods;
- The disease cycle, infection process and the infection cycle.

### **ECT 2**

- Description of the main grapevine diseases: symptoms, biology, diagnosis, life cycle, epidemiology and yield losses.

### **ECT 3**

- Disease control:
  - treatment against the causal agent;
  - through the host;
  - through the environment.



## Teaching methods

- Lectures by the Instructor (20 hours)
- Material for each ECTS provided before the classes via Blackboard

## Assessment

- written exam - 1 hour time
- 10 questions (multiple choice with only one right answer) mixed up with other questions from pre-courses of Viticulture and Enology (total of 30 questions)
- Minimum score 18 (min 6 for each subject)



UNIVERSITÀ  
CATTOLICA  
del Sacro Cuore

# Course outline

## Teaching materials:

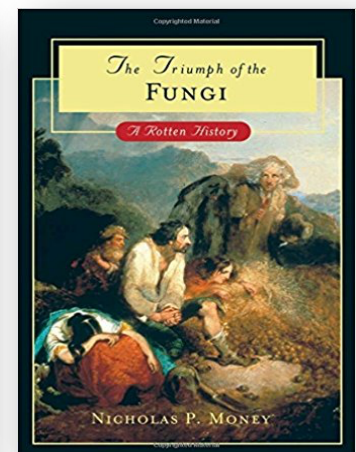
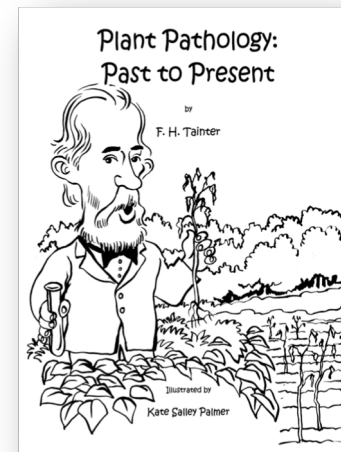
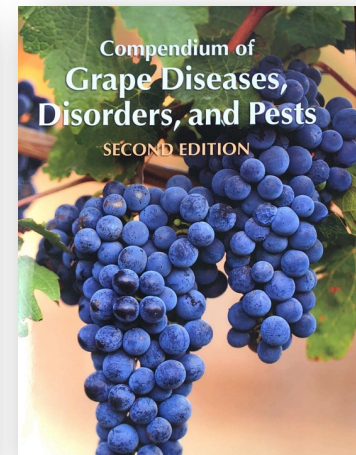
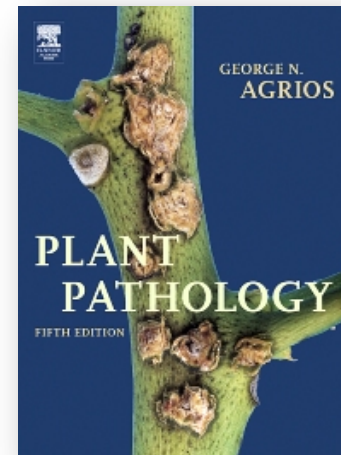
- ✓ Blackboard

## Suggested readings:

- ✓ Plant Pathology, 5th Edition - G. Agrios
- ✓ Compendium of Grape Diseases, Disorders and Pests, 2nd Edition – APS Press

## Supplementary materials:

- ✓ The Triumph of the Fungi – N. Money
- ✓ Plant Pathology: Past to Present – F.H. Tainter







UNIVERSITÀ  
CATTOLICA  
del Sacro Cuore

# Course outline

## Teaching objectives

- Reach a common knowledge of the main concepts in basic plant pathology
- Share a common (and appropriate) language
- Reach a general knowledge about the main grapevine diseases, their characteristics and their management principles



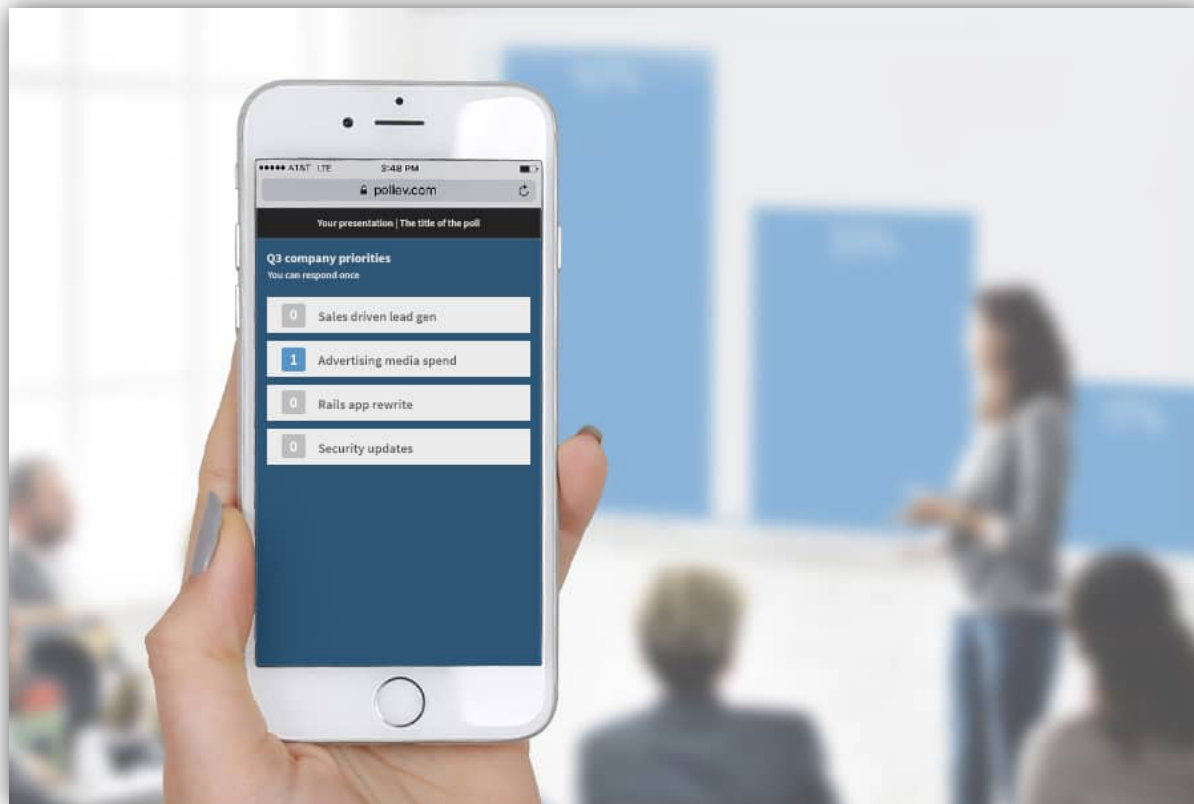




UNIVERSITÀ  
CATTOLICA  
del Sacro Cuore



# Poll Everywhere



# How would you rate the clarity of the presentation?

Poor **A**

Fair **B**

Average **C**

Good **D**

Excellent **E**